



> Model 50.43    NA

**The boundless  
powerhouse  
without limits.**



# Specifications

## Model 50.43



### Productivity

Working height:	43 ft 3.7 in	Continuous turntable rotation:	360°
Platform height:	36 ft 8.9 in	Driving speed (transport mode):	0 - 1.75 mph
Horizontal reach:	32 ft 9.7 in	Driving speed (at height):	0 - 0.88 mph
Travel height:	43 ft 3.7 in	Gradeability:	45% = 25°
Platform capacity:	727.5 lbs	Automatic bi-leveling:	15° / 15°
Platform rotation:	180°		
Vertical jib rotation:	180°		

### Measurements

#### Machine

Transport dimensions (l x w x h):	15 ft 3.1 in x 7 ft 2.6 in x 7 ft 6.5 in
Total mass without options:	10,692 lbs
Ground clearance:	1 ft 1.8 in

#### Platform

Standard - Dimensions (l x w x h):	5 ft 10.8 in x 2 ft 7.5 in x 3 ft 7.3 in
Option 1 - Dimensions (l x w x h):	4 ft 7.1 in x 2 ft 4.3 in x 3 ft 7.3 in
Option 2 - Dimensions (l x w x h):	7 ft 10.5 in x 2 ft 7.4 in x 3 ft 7.3 in
Entry width:	2 ft 1.4 in
Entry height:	3 ft 0.2 in
Step in height:	1 ft 3.7 in

#### Motor

18,5kW 3 cil. kubota diesel engine



### Mechanical

11,36 gal liter fuel tank capacity (ATD)  
Fully proportional controls  
Loadsensing hydraulic pump  
2 speed track motors  
Automatic proportional RPM controller

### Safety Features

Complies with ANSI A92 / CSA B354  
Tilt alarm  
LED flashing lights on rear  
Overhead safety crush prevention  
Integrated weight system in platform  
12V emergency lowering pump  
Dual top railing on basket  
Horn

### Options

#### Standard on NA-model

4x led work lights on main frame  
Led flood light under platform  
Non-marking rubber tracks (grey)  
HY-Link portal communications, online diagnostics

#### Standard Hyrax colors

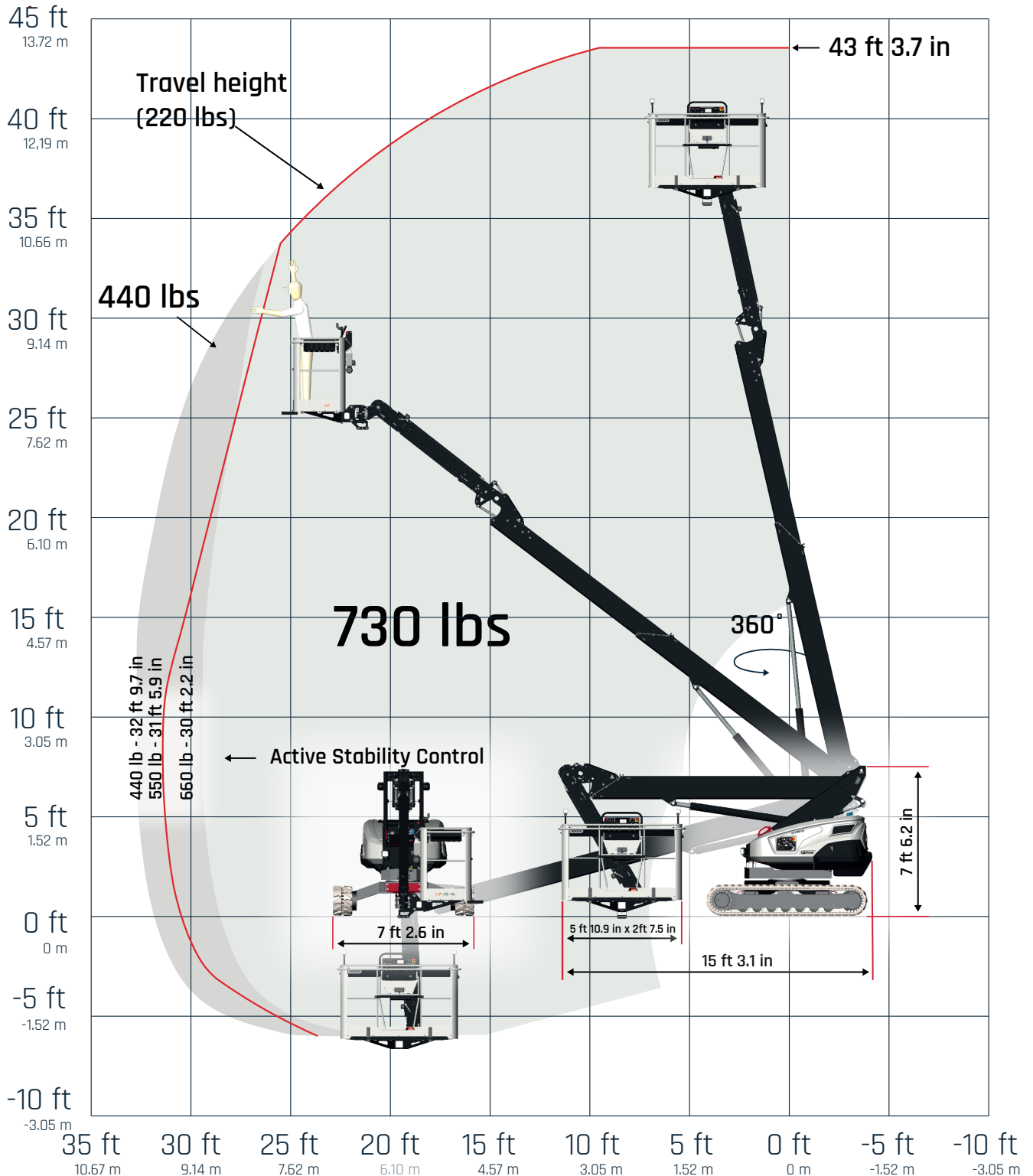
- Lashing and lifting points - Hyrax Red
  - Engine covers - signal white RAL 9003
  - All construction parts - black/grey RAL 7021
  - Work tray - galvanized steel
- Custom color configurations possible

#### Extra options

Foldable load carriers on platform (155 lbs)  
Extra screw trays  
Holder for spray cans  
Adjustable work lights on platform  
Water level holder in platform  
Pail hanger in platform  
Solar panel installation basket incl. load carriers and clamps

## Diagrams

# Working range



Hyrax Industries BV. has the policy to continuously improve their products.  
Product specifications are subject to change without prior notice and can be changed without obligation.

Model 50.43

# The rock

[www.hyraXindustries.com](http://www.hyraXindustries.com)



## Heavy-duty design

With this 5 tons total weight you defy every construction site and nevertheless 4 machines fit on only 1 semi-trailer.



## Working area

The fully automatic leveling system corrects slopes of up to 15° and remains drivable at full height.



## Working load 727,5 lbs

Built for teamwork: 3 people, in addition to their equipment.



## Work at 43 ft 3.7 in

Work stable at 43 ft 3.7 in working height and 32 ft 9.7 in of outreach.

**HYRAX**  
AERIAL LIFTS

Pushing the limit >>>>